



# LACLUSIENNE CLUFIX

## ENDFIX® a new fastening solution

**NEW**

Assembly costs cut by

**2/3**



Replace an unattractive and high process cost solution



a quick, aesthetic and easy to fit new fastening solution !

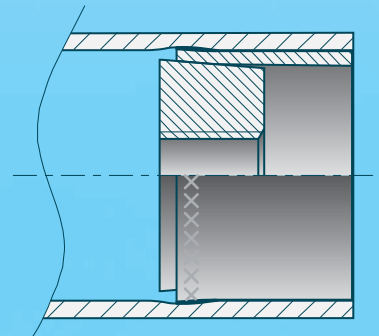
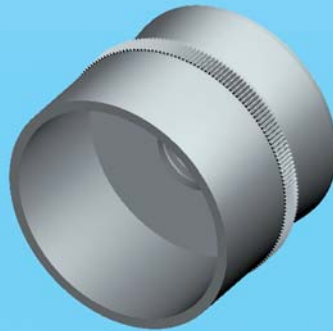
**ENDFIX® is the solution to achieve an internal thread in a round tube.**

**ENDFIX® is crimped inside the tube.**

**ENDFIX® installation is completed without welding, so eliminating any rework operation.**

### Main advantages :

- High resistance & aesthetic assembly and without any welding operation
- Simple high speed assembly, no special skills required
- 100% correct location of the thread in the tube guaranteed at the crimping operation
- Eliminate retapping of threads (to remove weld spots or paint excess)
- Eliminate grinding and polishing operations
- Can be used on painted tubes



### Product range :

From M5 to M12

Material : steel / stainless steel

For round tubes with outer diameters from 16 to 45 mm with thickness from 1 to 3 mm

### FASTENING DEVICES

LACLUSIENNE CLUFIX - 313 rue Louis Armand  
BP 220 - Z.I. des grands prés - 74304 Cluses Cedex

Tel - +33 (0)4 50 98 13 13  
Fax - +33 (0)4 50 98 28 89  
Email - commercial@clufix.com

[www.laclusienne.com](http://www.laclusienne.com)